

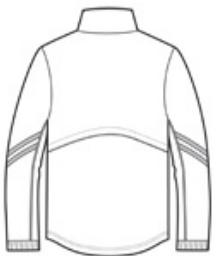


Wet, windy days are no match for our water-repellent, wind-resistant pullover. It features ventilating back vents and a side seam zipper for easy on/off.

- 100% polyester ripstop with DWR finish
- 100% polyester mesh body lining, polyester woven sleeve lining
- Cadet collar
- Tag-free label
- Rib knit inner collar
- Exposed Vislon zipper
- Front zippered pockets
- Left side seam zipper
- Half elastic, half self-fabric cuffs with hook and loop closures for comfort
- Port Pocket™ for easy embroidery access
- Piping and stripes details on front and back of sleeves
- Back vents with hook and loop closures
- Drawcord hem with toggles



front

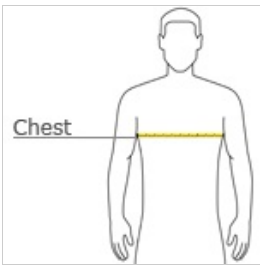


back

**CARE INSTRUCTIONS**

Machine wash cold. Gentle cycle with like colors. Use mild detergent. Remove immediately. Do not allow to lay on itself when wet. Use only non-chlorine bleach when needed. Tumble dry low. Cool iron if necessary. Do not dry clean.

**HOW TO MEASURE**







**CHEST**  
With arms down at sides, measure around the upper body, under arms and over the fullest part of the chest.

**SIZE CHART**

	XS	S	M	L	XL	2XL	3XL	4XL
Chest	32-34	35-37	38-40	41-43	44-46	47-49	50-53	54-57

**COLOR INFORMATION**

			
Black/ Graphite Grey PMS NTR BLACK C	Black/ True Red PMS NTR BLACK	True Navy/ White PMS 533 C	True Royal/ White PMS 7687 C